

CABLE ROUTING CLIPS

FOR PHOTOVOLTAIC ELECTRICAL CABLES



Screwless and tool-free, clipped fastening solutions provide fast and simple assembly. It allows customers to reduce the overall cost of renewable energies.

Cable Routing Clips

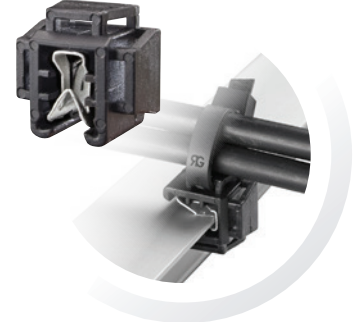
- A large scope of solutions for fixing cables over, along or on the side of module edges or rail structures, in order to improve wirings.
- Cable routing clips represent easy and quick solutions for cable installations.



*Multi cables parallel to the edge.
One metal piece.*



Multi-directional cable routing



*Multidirectional cable routing.
Plastic contact only.*

BENEFITS

))) EASY TO USE

Tool free installation.

))) ROBUST

- Metal parts with surface treatment adapted to corrosive environments.
- Galvanic couple reduced with aluminum.
- With rolled edges to prevent damage to the sheath when pulling cables.
- Instant application achieved with the barb design.

))) EASE THE CABLE MAINTENANCE

Possibility to re-open the clips.

))) MULTIPURPOSE

- For supports with thicknesses from 0,7 to 4 mm: can fit on module edges or on structure.
- For cables 4, 6, 10 mm² section or strands.

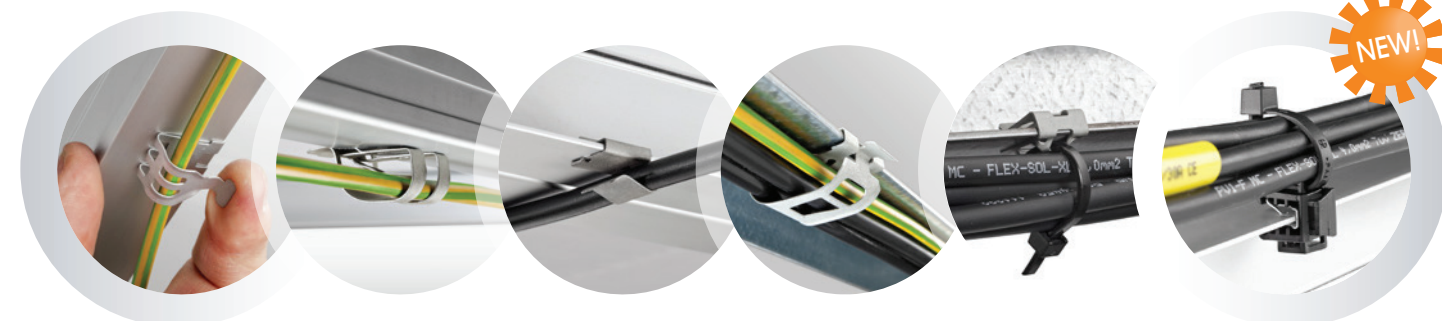
TECHNICAL SPECIFICATIONS



	CLIPS MANAGING ONE CABLE			CLIPS MANAGING SEVERAL CABLES AND STRANDS		
ARTICLE N°	228185001	018690003	019659002	228187001	208738001: edge mounting adapter + 056476001: cable tie	236331001: edge mounting adapter + 056476001: cable tie
CABLE HOLDING	Metal	Metal	Metal	Metal	Metal/Plastic Any standard cable ties up to 3.6mm width	Plastic Any standard cable ties up to 5mm width
MATERIAL	C67S Steel	C67S Steel	C67S Steel	C67S Steel	C67S Steel Polyamid 6.6 (black color)	C67S Steel Housing & Tie: Polyamid 6.6 (black color) - RoHS compliant
SURFACE TREATMENT	Metal: Combines an inorganic zinc-rich with basecoat with aluminum-rich organic topcoat					-
CORROSION RESISTANCE	Metal: No red rust after 720 hours of Neutral salt spray according to EN ISO 9227:2012					-
CABLE ORIENTATION	Parallel to the edge	Parallel to the edge with guidance adjusted to different diameters	Perpendicular to the edge	Parallel to the edge	Multi-directional	Multi-directional
EXTERNAL DIAMETERS	Max. 8mm	From 4,5 to 10mm	From 5,7 to 7mm	Up to 16mm (or 4 cables of diam. 6mm)	With AR cable ties 3,6 x 200mm: Strand or cables with total diam. from 6 to 50mm max.	With AR cable ties 3,6x200mm: Strand or Cables with total diam. from 6 to 50 mm max.
THICKNESS RANGE OF THE SUPPORT (Module frame or structure)	2,25 to 2,75mm	0,8 to 3mm	0,7 to 2,1mm	1,5 to 2,5mm	1,5 to 4mm	1,5 to 3,5mm
POSSIBILITY TO RE-OPEN	YES	YES	YES	YES	Adapter unchanged/ New Cable tie	Adapter unchanged/ New Cable tie
QUANTITY OF PIECES PER BOX	1800	900	4200	750	208738001: 4300 056476001: 1000	236331001: 2000 056476001: 1000

Product Information disclosed in this "data sheet" can be modified without any previous notice.

IN SITUATION



Ref. 228185001

Ref. 018690003

Ref. 019659002

Ref. 228187001

Ref. 208738001
+ Ref. 056476001

Ref. 236331001
+ Ref. 056476001



© *ARaymond Energies SAS (RCS Grenoble 798 705 604) ZI Technisud 123 rue Hilaire de Chardonnet 38100 Grenoble FRANCE has designed this data sheet.
** "ARaymond Network" means a network of companies which have a license of use of ARAYMOND™. This data sheet is provided for information purposes only and does not constitute an offer or an agreement. ARaymond Energies makes no warranty or representation whatsoever, express or implied, including but not limited to the accuracy, reliability, novelty, completeness, fit for a particular purpose or merchantability of the information contained in it. If you need further information, please contact ARaymond Energies.
EE_2016-1003-EN - © Raygroup Communication - Photo Credit: ©ARaymond Network, ©Ronan Kerloch

www.araymond-energies.com

ARAYMOND ENERGIES
123 rue Hilaire de Chardonnet
ZI Technisud
38100 Grenoble
FRANCE

ARaymond 
MORE THAN FASTENING